

Christian County 9-1-1

IN AN EMERGENCY



CALL 9-1-1

EMERGENCY INFORMATION



MY NAME: _____

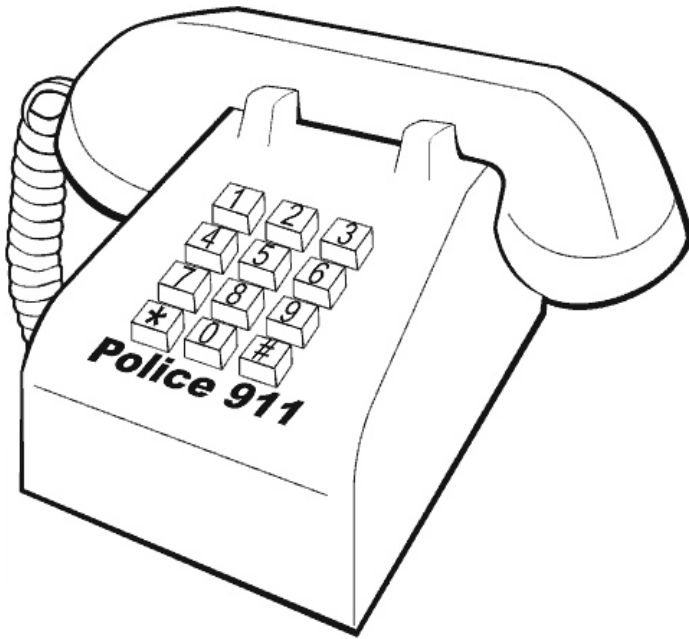
MY ADDRESS: _____

MY CITY OR TOWN: _____

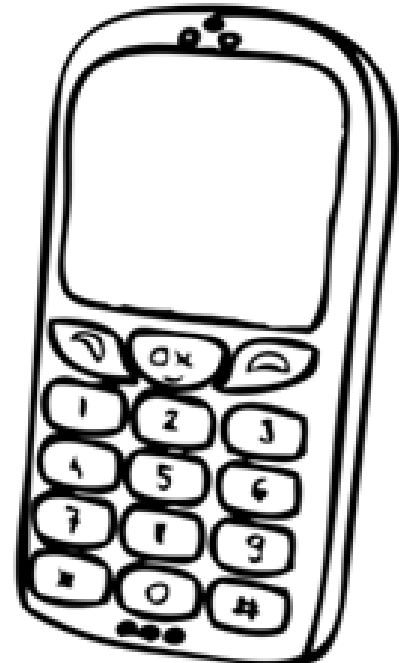
MY PHONE NUMBER: _____

MY SCHOOL: _____

HOW TO CALL 911



PUSH 9 .. THEN 1 .. THEN 1 AGAIN



PUSH 9 .. THEN 1 .. THEN 1 AGAIN AND THE
CALL BUTTON

COLOR THE 9 AND THE 1 YELLOW ON EACH PHONE

BE READY TO TELL THE 911 DISPATCHER WHERE YOU ARE,
WHAT THE EMERGENCY IS, AND THE PHONE NUMBER YOU ARE
CALLING FROM. STAY CALM, STAY ON THE PHONE AND TRY TO
ANSWER ALL OF THE DISPATCHER'S QUESTIONS. TRY TO DO
EVERYTHING THE DISPATCHER TELLS YOU.



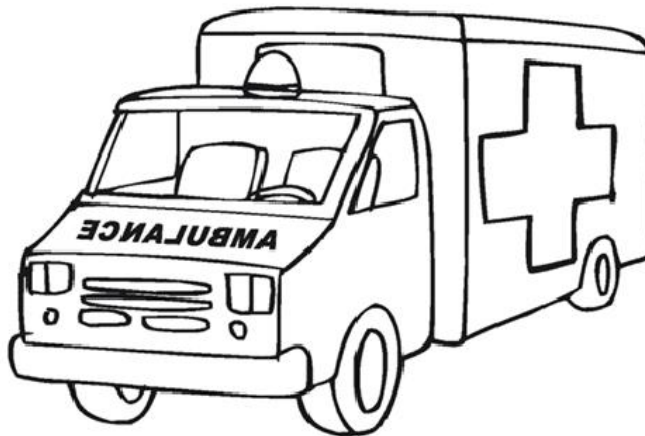
THE 9-1-1 DISPATCHER WILL SEND HELP



POLICE



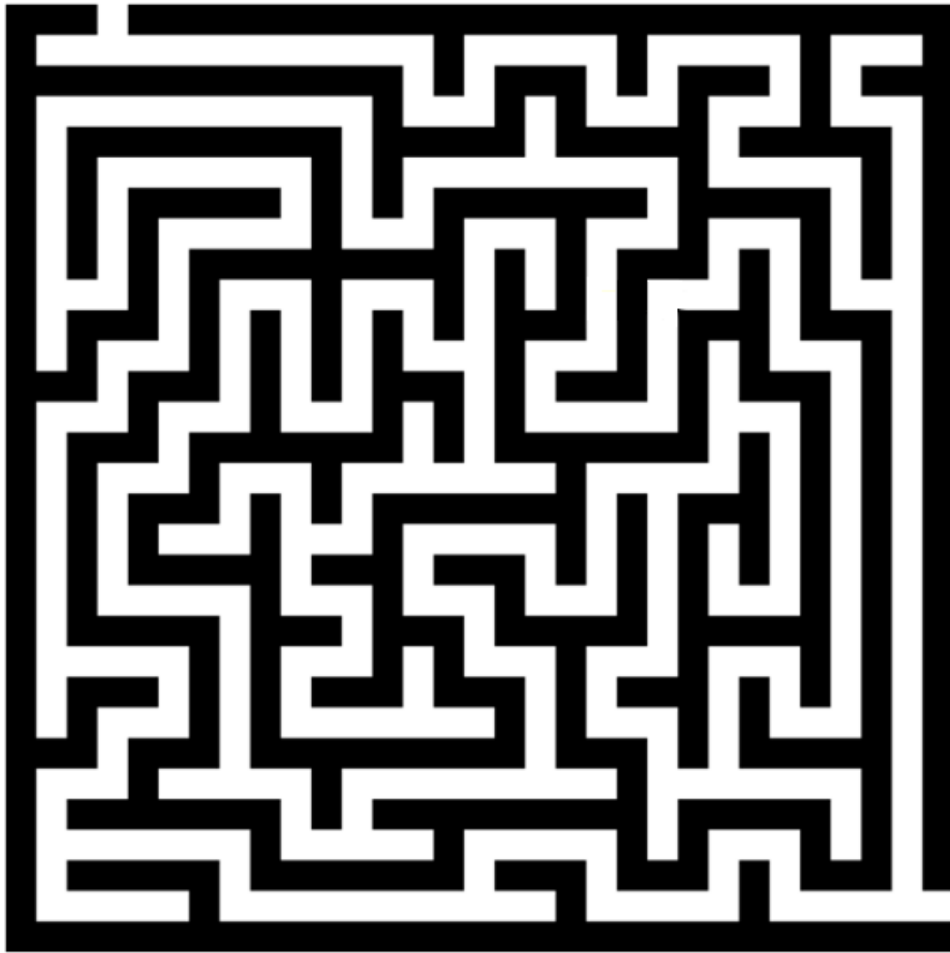
FIRE



EMS

HELP!

SHOW THE OFFICER HOW TO GET TO THE EMERGENCY



FIRE SAFETY



IF YOU ARE IN A BURNING BUILDING, YELL
"FIRE," GET OUT, STAY OUT, AND CALL 911

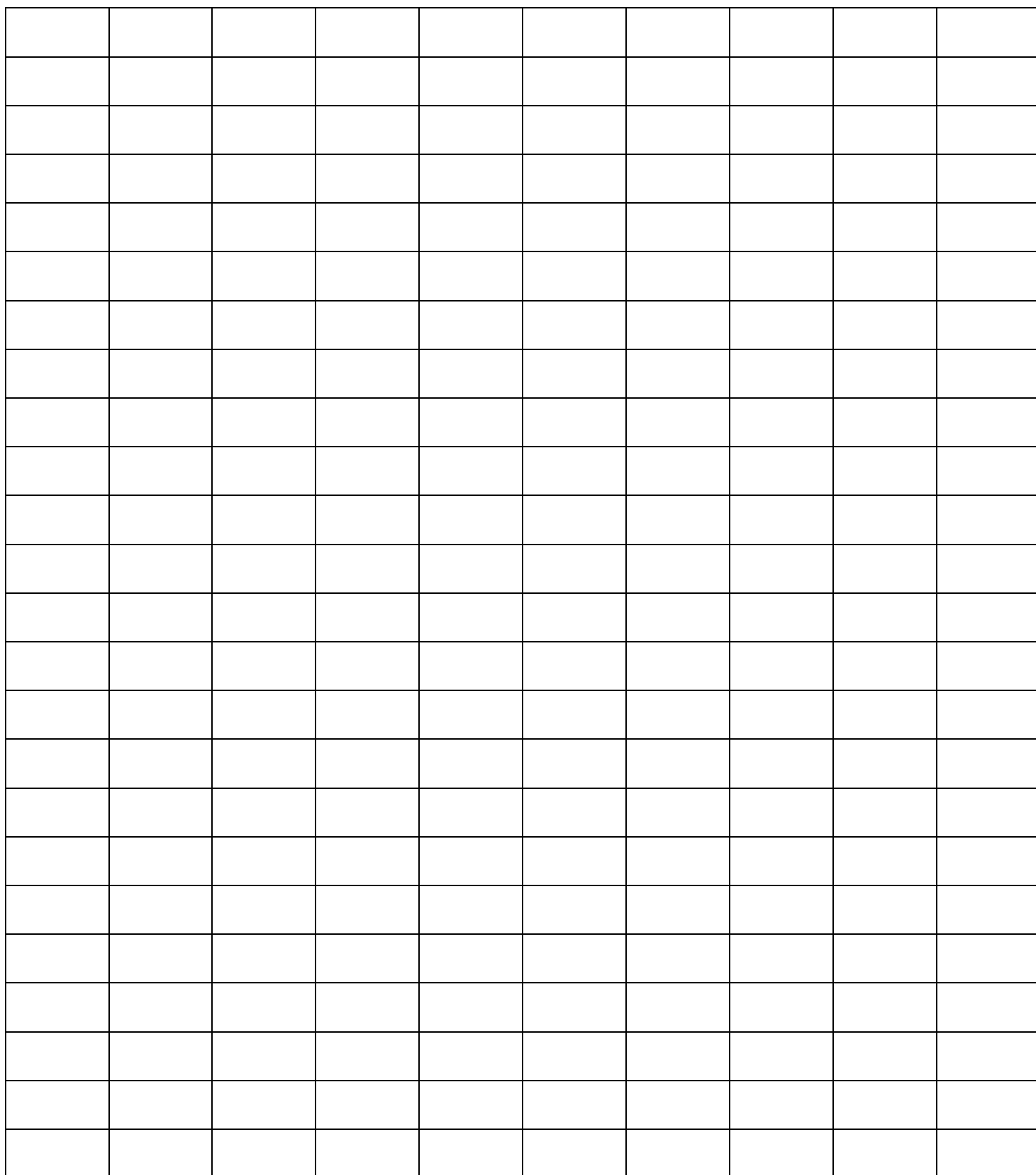
NEVER PLAY WITH MATCHES,
LIGHTERS. OR CANDLES!!



FAMILY FIRE PLAN

DO YOU AND YOUR FAMILY HAVE A PLAN IN CASE OF A FIRE? IF NOT, YOU SHOULD SIT DOWN AND WORK OUT A PLAN TOGETHER. HERE ARE SOME TIPS ON WHAT YOUR PLAN SHOULD INCLUDE

- USE THE GRID ON THE NEXT PAGE TO MAKE A MAP OF YOUR HOUSE, INCLUDE DOORS AND WINDOWS
 - o MARK 2 (TWO) WAYS OUT OF EACH ROOM IN YOUR HOUSE
 - o FIND A WAY TO MARK WHERE EACH OF YOUR SMOKE ALARMS ARE
- PICK A FAMILY MEETING PLACE OUTSIDE WHERE EVERYONE CAN MEET
 - o MAKE SURE THE MEETING PLACE IS A SAFE DISTANCE AWAY FROM YOUR HOUSE
- **PRACTICE** YOUR FIRE ESCAPE PLAN AT LEAST TWICE PER YEAR
 - o PRACTICE 'ESCAPING' FROM YOUR HOUSE AND LOW CRAWLING AT DIFFERENT TIMES OF THE DAY
- MAKE SURE EVERYONE KNOWS HOW TO CALL 9-1-1



POLICE



SOME POLICE OFFICERS RIDE ON HORSES.
YOU MIGHT SEE THEM IN BIGGER CITIES



CALL 9-1-1 IF YOU SEE ANYONE
COMMITTING A CRIME



NEVER TOUCH A GUN YOU FIND. TELL
AN ADULT OR CALL 9-1-1 IF AN ADULT
IS NOT AROUND.



SOME POLICE OFFICERS DRIVE
MOTORCYCLES.

WORD FIND

S K D L K M C W J D W Y
D S W X J Q J P X F F M
F U E F L O K V S N W A
T T D R K C I Z Q M K V
L J D E D C S L F C E H
J R C B X D P I E A Z Y
U E X Y D L A C P L E H
V B P V R F I F I L Z O
Y M I H I L S M A Z O T
A U R R O C R I M E M G
X N E P B N M T X O N K
Y C N E G R E M E H X J

ADDRESS

CALL

CRIME

EMERGENCY

EMS

FIRE

HELP

PHONE

NUMBER

POLICE



DESIGN YOUR OWN POLICE CAR!



CREATE YOUR OWN BADGE!

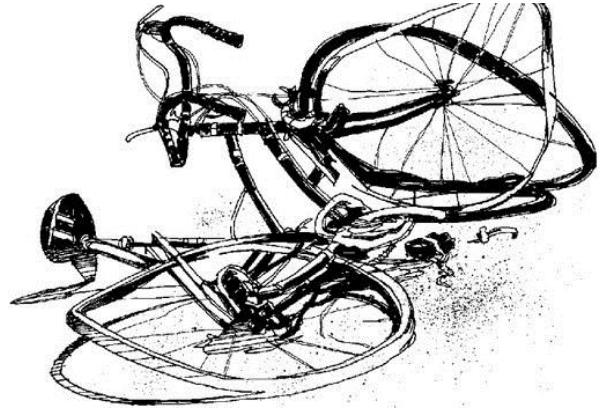
MEDICAL



IF YOU HAVE A SERIOUS MEDICAL EMERGENCY AND NEED TO GO TO THE HOSPITAL



IF SOMEONE PASSES OUT OR QUILTS
BREATHING.



IF SOMEONE HAS A BAD BIKE ACCIDENT.
(THIS IS WHY YOU SHOULD ALWAYS WEAR
YOUR SAFETY EQUIPMENT.)

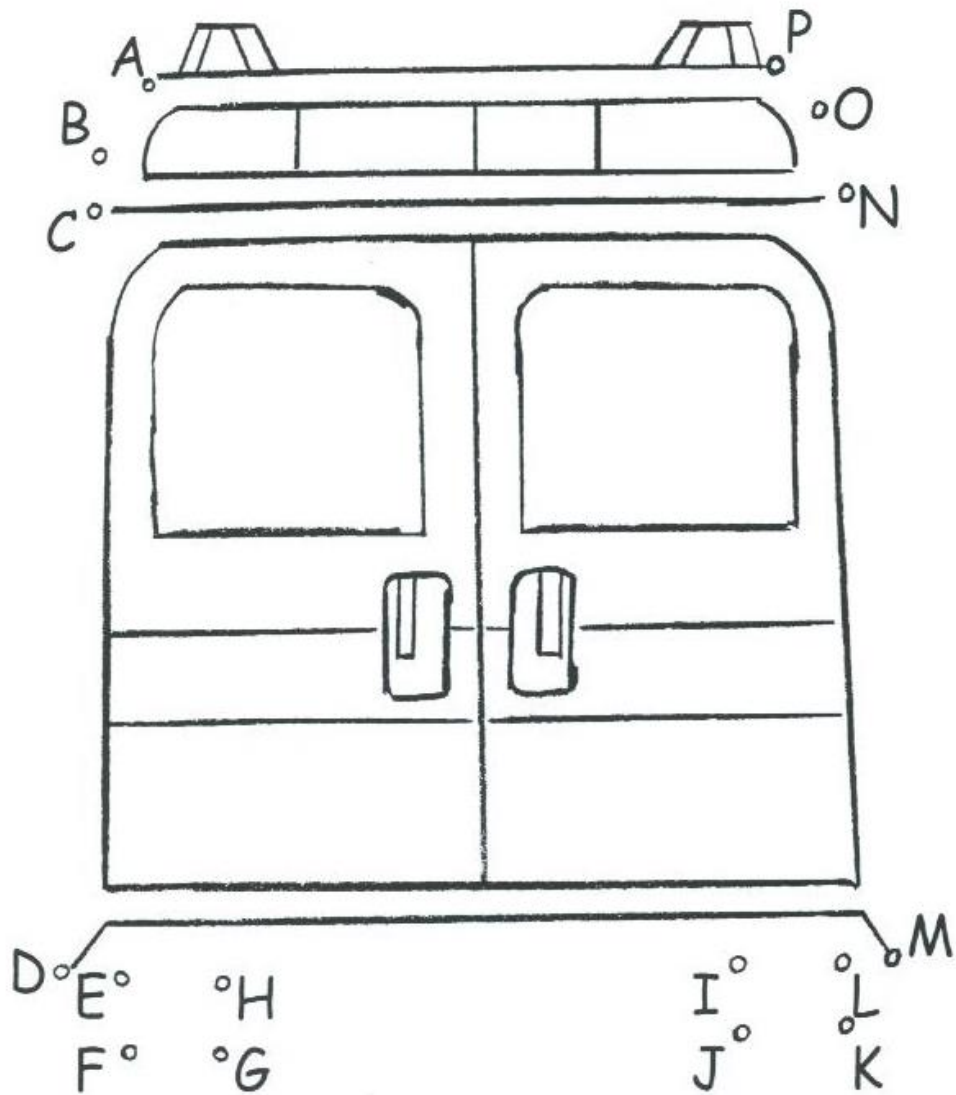


IF SOMEONE FALLS DOWN THE STAIRS OR
OFF A LADDER AND IS INJURED.

Help the **9-1-1** operator match
the helper to the emergency.



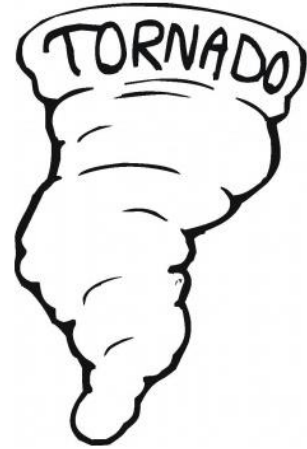
Hurry! Connect the alphabet so the ambulance
can reach the **9-1-1** emergency.



WEATHER TIPS



WHEN YOU HEAR THUNDER OR SEE LIGHTNING, GO INSIDE RIGHT AWAY!



IF YOU HEAR THE TORNADO SIRENS, GET TO YOUR SHELTER RIGHT AWAY!



WHEN IT IS COLD OUTSIDE, DRESS WARM AND ALWAYS ASK PERMISSION BEFORE YOU GO OUT TO PLAY.



NEVER PLAY IN OR AROUND FLOOD WATERS.

9-1-1 TIPS TO SHARE WITH YOUR FAMILY

WHEN TO CALL 9-1-1

- ✓ TO REPORT A MEDICAL EMERGENCY
- ✓ TO REPORT A FIRE
- ✓ TO REPORT A CRIME
- ✓ TO REPORT ANY ACTIVITY THAT IS HARMFUL TO A PERSON, ANIMAL OR PROPERTY
- ✓ TO REPORT ANY SUSPICIOUS ACTIVITY THAT MIGHT RESULT IN HARM TO ANY PERSON, ANIMAL OR PROPERTY

WHEN *NOT* TO CALL 9-1-1

- ✓ TO REPORT POWER OUTAGES (UNLESS MEDICAL EQUIPMENT DEPENDS ON POWER)
- ✓ TO BE TRANSFERRED TO THE POWER COMPANY
- ✓ TO REPORT DOWNED TREE LIMBS THAT ARE NOT PRESENTING AN IMMEDIATE THREAT TO LIFE OR PROPERTY
- ✓ TO REPORT LOUD NOISES OR OTHER NUISANCES
- ✓ TO REPORT THE USE OF ILLEGAL FIREWORKS
- ✓ TO RECEIVE DRIVING DIRECTIONS

(IN THE CASE OF THESE TYPES OF INCIDENTS, CALL A NON-EMERGENCY NUMBER. (417)582-1030

REMEMBER!



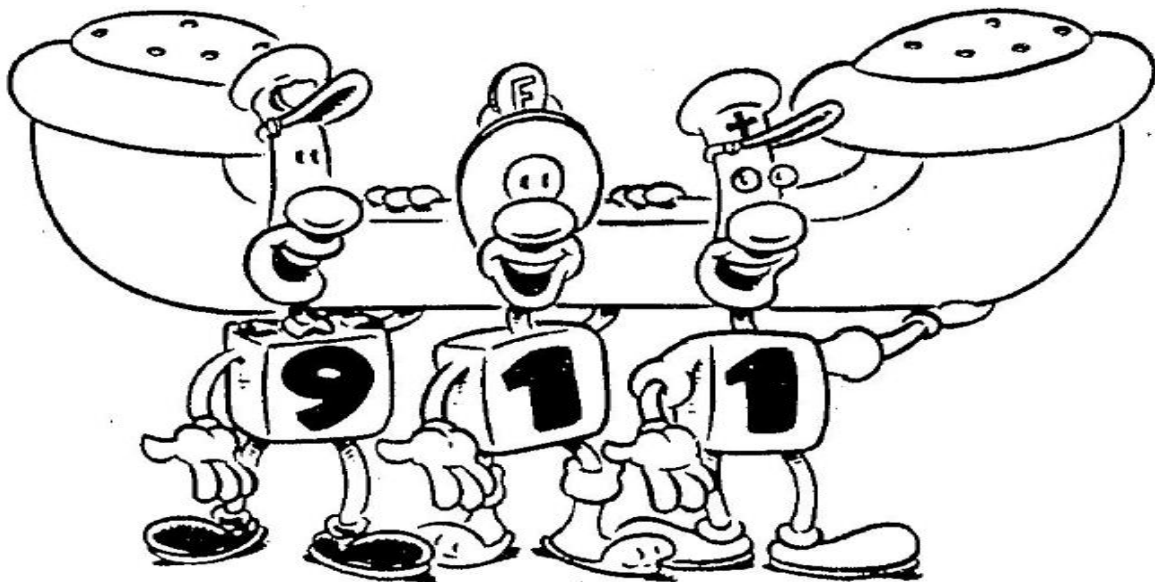
TELEPHONES ARE NOT TOYS



NEVER CALL 9-1-1 AS A JOKE



ONLY CALL 9-1-1 FOR EMERGENCIES





"WE HELP!"

CHRISTIAN COUNTY EMERGENCY SERVICE
110 W. ELM ST. ROOM 50
OZARK, MO 65721
(417)582-1030